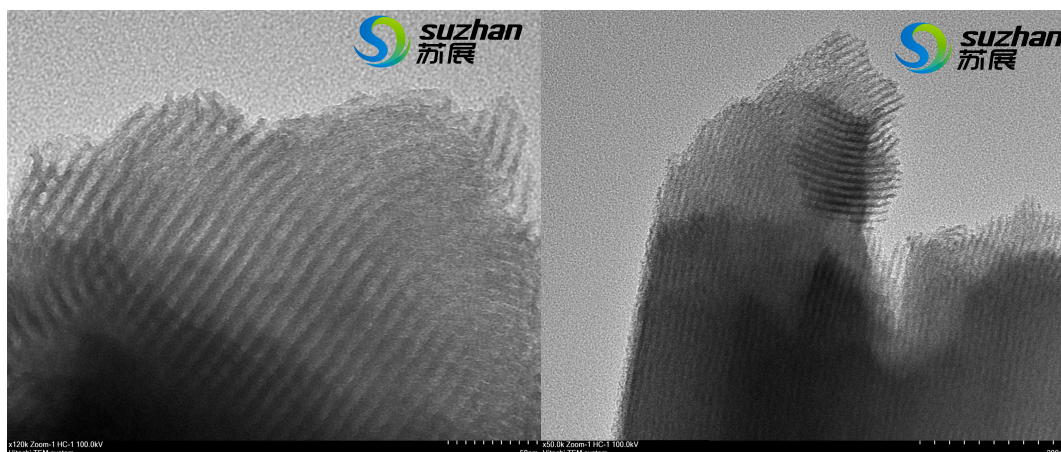


SZ-010 高比表面积 SBA-15

1 技术参数 (Specification)

产品 Product	高比表面积 SBA-15 High specific surface area SBA-15
牌号 ID	SZ-010
比表面积 specific surface area	700-800m ² /g
孔径 Porous diameter	6-12nm
孔容 Porous volume	1-2cm ³ /g
外观 Appearance	白色粉末 white powder

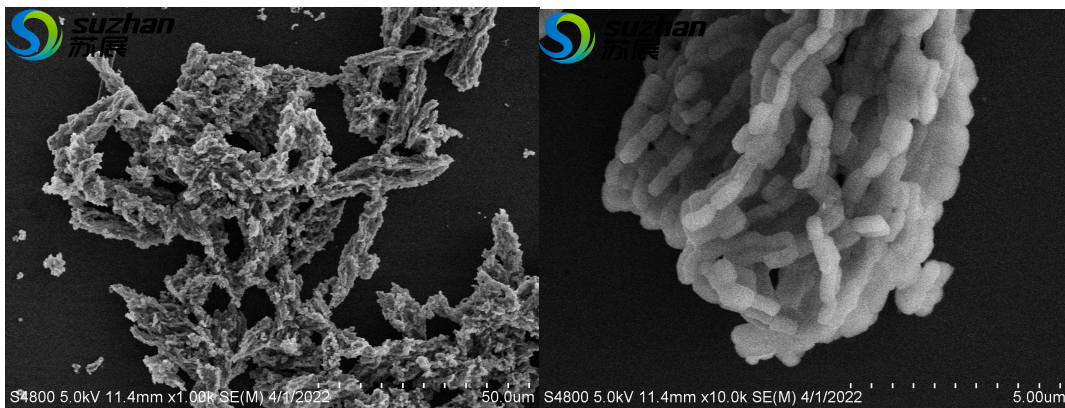
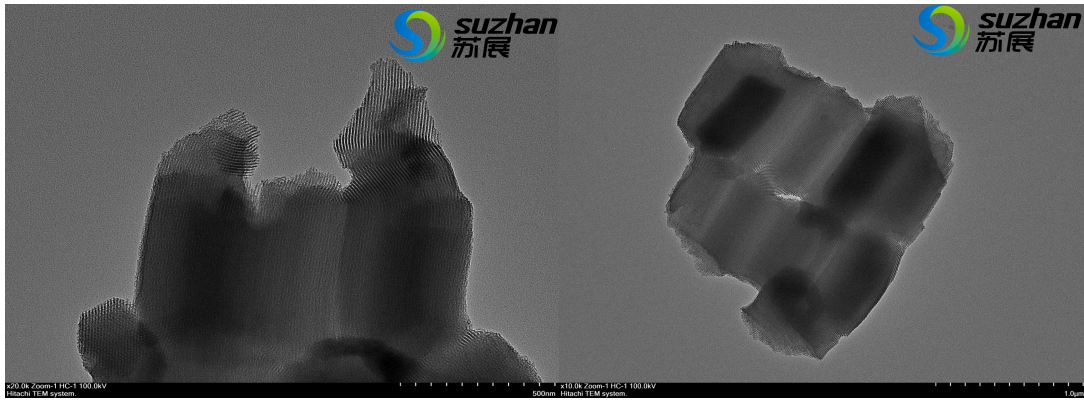
2 表征测试 (Characterizations)



南京苏展智能科技有限公司
 地址: 南京市栖霞区广月路 30 号十月科创园 S06 栋南京邮电
 大学国家大学科技园
 邮编: 210033
 电话 Tel: 13801599205

Nanjing Suzhan Smart Tech Co.,Ltd
 Add: Nanjing City Jiangsu Province China

Zip: for 210033
 E-mail: ensuzhan@126.com
[Http://www.ensuzhan.com](http://www.ensuzhan.com)



3 应用领域 (Application Fields)

SBA-15 介孔分子筛具有较大的孔径，及较厚的孔壁，而具有更好的水热稳定性，有利于在温度较高体系中有水的反应中应用，在催化、分离、生物及纳米材料等领域有广泛的应用前景。可用于氧化还原，酸碱、聚合、光催化、酯化、吸附分离、模板材料等应用场景。

SBA-15 mesoporous molecular sieves have larger pore diameter and thicker Pore Wall, and have better hydrothermal stability, which is favorable for the application in the reaction with water in higher temperature system, it has a wide application prospect in catalysis, separation, biology and nano-materials. It can be used in Redox, acid-base, polymerization, photocatalysis, esterification, adsorption separation, template materials and other applications.

3 储存条件 (Storage Conditions)

常温干燥避光密封保存，在未引入污染源的情况下最长保存期限为 12 个月。

Sealed at room temperature, dry and keep away from light, Expiry date: The maximum shelf life is twelve months without the introduction of a source of pollution.

4 使用须知 (Terms and Conditions)

本品粉末状，无毒害，使用不当会引起呼吸道眼部刺激。直接接触会引起皮肤不适，建议使

南京苏展智能科技有限公司
地址: 南京市栖霞区广月路 30 号十月科创园 S06 栋南京邮电
大学国家大学科技园
邮编: 210033
电话 Tel: 13801599205

Nanjing Suzhan Smart Tech Co.,Ltd
Add: Nanjing City Jiangsu Province China

Zip: for 210033
E-mail: cmsuzhan@126.com
[Http://www.cnsuzhan.com](http://www.cnsuzhan.com)



南京苏展智能科技有限公司

用时佩戴口罩和手套。

This product powder, non-toxic, improper use will cause respiratory tract eye irritation. Direct contact will cause skin discomfort, it is recommended to wear masks and gloves when using.

声明：我司保证技术报告中的信息的准确性，但不保证材料的普适性，也不负责由此导致的任何损失。提供的参数为统计数据，允许少量浮动。且我司提供的技术报告都是面向所有客户，报告中的表征图片请勿擅自截图使用。

Disclaimer: SUZHAN LLC believes that the information in this Technical Data Sheet is accurate and represents the best and most current information available to us. SUZHAN Material makes no representations or warranties either express or implied, regarding the suitability of the material for any purpose or the accuracy of the information contained within this document. Accordingly, SUZHAN Material will not be responsible for damages resulting from use of or reliance upon this information. Please do not use screen shots of any characteristic graphs in this report without permission.

3/23/2022 Ed



南京苏展智能科技有限公司
地址：南京市栖霞区广月路 30 号十月科创园 S06 栋南京邮电
大学国家大学科技园
邮编：210033
电话 **Tel:** 13801599205

Nanjing Suzhan Smart Tech Co.,Ltd
Add: Nanjing City Jiangsu Province China
Zip: for 210033
E-mail: cmsuzhan@126.com
[Http://www.cnsuzhan.com](http://www.cnsuzhan.com)