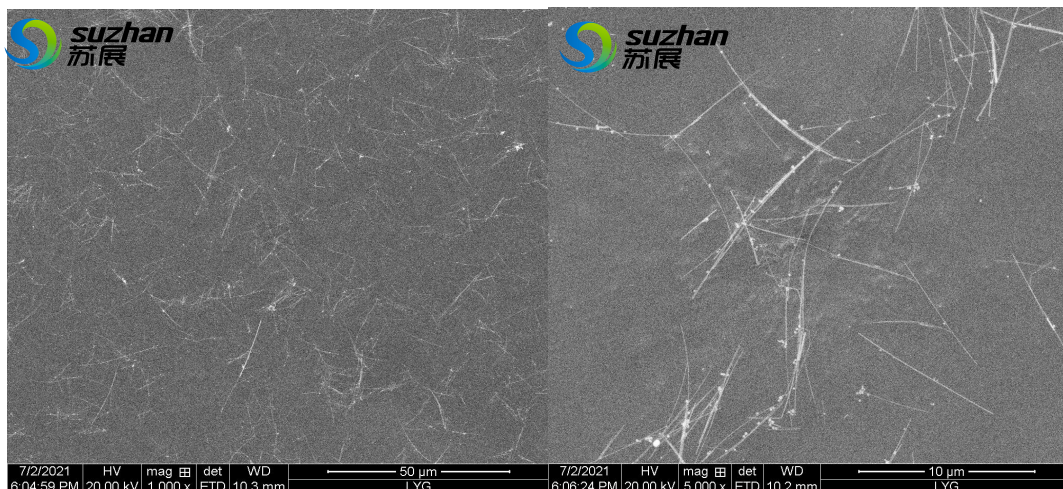


## SZ-008-3 银纳米线

### 1 技术参数 (Specification)

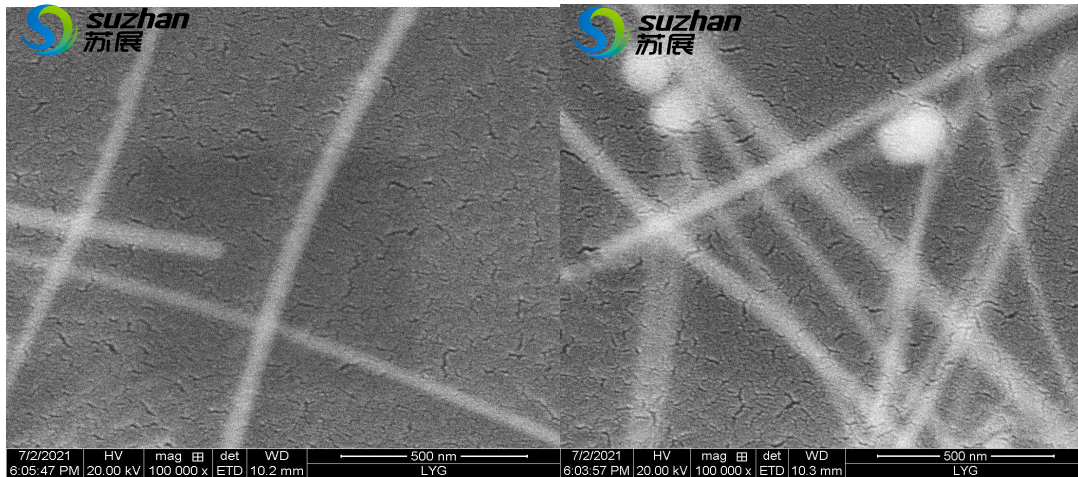
产品 Product	银纳米线 Silver Nanowires
牌号 ID	SZ-008-3
直径 Diameter	40-50nm
长度 Length	10-20 $\mu$ m
浓度 Concentration	$\leq 10$ mg/ml
溶剂 Solvent	甲醇、乙醇、水 Methanol、Ethanol or water

### 2 表征测试 (Characterizations)



南京苏展智能科技有限公司  
 地址: 南京市栖霞区广月路 30 号十月科创园 S06 栋南京邮电大学国家大学科技园  
 邮编: 210033  
 电话 Tel: 13801599205  
[Http://www.cnsuzhan.com](http://www.cnsuzhan.com)

Nanjing Suzhan Smart Tech Co.,Ltd  
 Add: Nanjing City Jiangsu Province China  
 Zip: for 210033  
 E-mail: [cnsuzhan@126.com](mailto:cnsuzhan@126.com)



### 3 应用领域 (Application Fields)

透明导电薄膜、柔性显示器、太阳能电池板、传感器、生物医药、催化剂等。

Transparent conductive films, flexible displays, solar panels, sensors, biological medicine, catalysts, etc.

### 4 储存条件(Storage Conditions)

干燥避光密封保存，开封前最长保存期限 1 年。

Sealed, avoid light, and keep dry at room temperature. Expiry date: One year before unsealing.

### 5 使用须知 (Terms and Conditions)

银纳米线因较长会有沉底现象，请使用前摇匀即可，可辅以玻璃棒搅拌；体系中有少量的颗粒存在；分散均匀后可维持一段时间不沉降，使用中若需超声，需尽量控制时长 30s 以内。

The silver nanowires will sink to the bottom because of its long length. Please shake it well before use. It can be mixed with glass Rod; There are a few particles in the system; After uniform dispersion, it can be maintained for a period of time without sedimentation. If ultrasonic is needed in use, the duration should be controlled within 30s as far as possible, and the ultrasonic power should be 300W.

**声明：**我司保证技术报告中的信息的准确性，但不保证材料的普适性，也不负责由此导致的任何损失。提供的参数为统计数据，允许少量浮动。且我司提供的技术报告都是面向所有客户，报告中的表征图片请勿擅自截图使用。

**Disclaimer:** SUZHAN LLC believes that the information in this Technical Data Sheet is accurate and represents the best and most current information available to us. SUZHAN Material makes no representations or warranties either express or implied, regarding the suitability of the material for any purpose or the accuracy of the information contained within this document. Accordingly, SUZHAN Material will not be responsible for damages resulting from use of or reliance upon this information. Please do not use screen shots of any characteristic graphs in this report without permission.

12/07/2020 Ed